

Anti-abrasive, hydrophobic and oleophobic coating

Application examples

Screens
Jewelry

Ideal deposition process

Dip-coating
or Spray-coating

Ideal type of substrate

Any one including
thermally sensitive

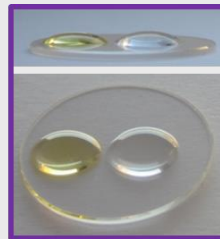
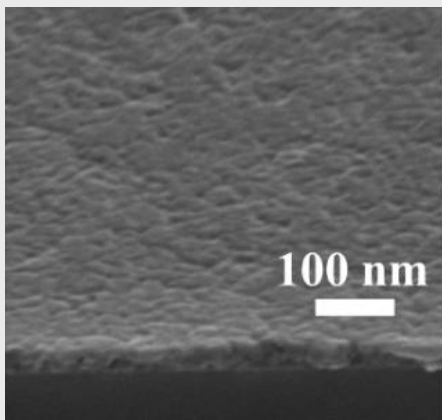
Layer properties:

Young modulus $E > 50$ GPa (with load = $30\mu\text{N}$)

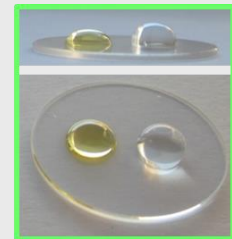
Hardness $H > 20$ GPa

Water contact angle = 90 to 110°

Hexadécane contact angle = 50 to 65°



only
sapphire substrate



sapphire substrate
+ hydro/oleo-phobic layer

